

## TECHNICAL CHARACTERISTICS

### 1. General Characteristics

Dimensions: 25.50L x 19.70W x 2.50H mm  
 Weight: Approx. 0.8g  
 Contact principle: Friction technology  
 Operating position: Shaft up / Down / Horizontal  
 Mounting System: SMT Type  
 Durability: 10,000 cycles min.

### 2. Mechanical Characteristics:

Insulation material: Thermoplastic, UL 94V-0

### 3. Electrical Characteristics

Number of contacts (Optional): 6, 8pins  
 Contact resistance: 50 mΩ typical, 100 mΩ max.  
 Insulation resistance: > 1000 MΩ / 500 VDC

### 4. Solderability

Wave: Not applicable  
 Vaporphase: 215°C, 30 sec. Max.  
 IR reflow: 230°C, 10~15 sec. Max.  
 Manual soldering: 360°C, 3 sec. Max.

### 5. Environmental Characteristics

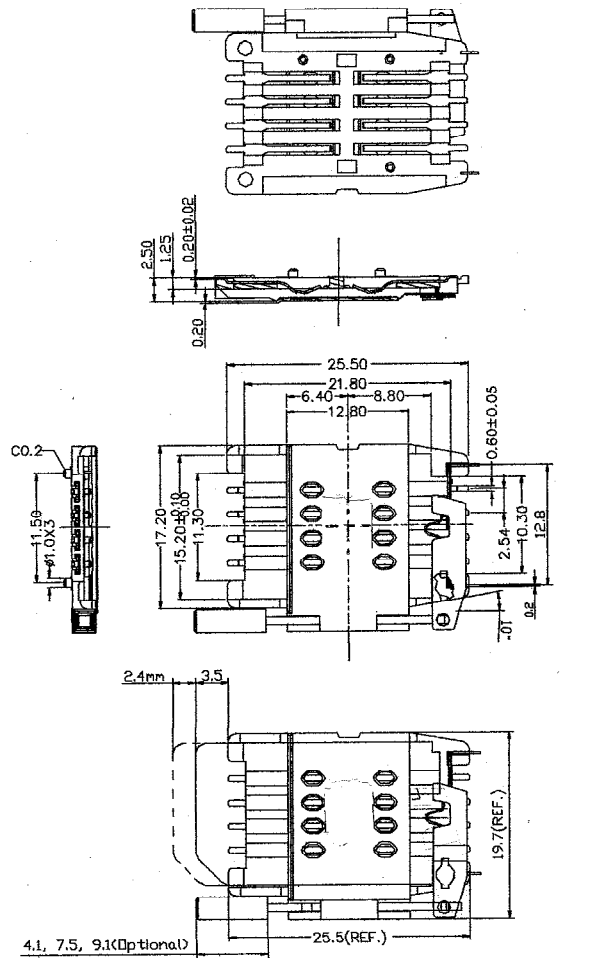
Operating temperature: - 40°C, ~ + 85°C,  
 Operating humidity: 10 % ~ 95 % RH  
 Storage temperature: - 40°C, ~ + 85°C,  
 Storage humidity: 10 % ~ 95 % RH  
 Thermal shock: - 40°C, ~ + 85°C, 5 cycles  
 Damp Heat: 40°C, 90 % RH, 500HR.  
 Salt-mist: 35°C, 5%, NaCl, 48HR.

**SIM Card Acceptor**

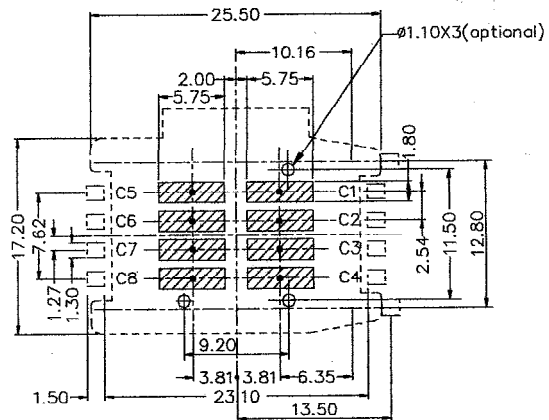
**Model No.: ICA-505**

**Revision:0.93**

**Date:10 Jan., 2003**



Unit: mm; Tolerances: ±0.10mm  
**Mechanical outline dimension**



Unit: mm; Tolerances: ±0.10mm  
**Reference dimension for PCB layout**